



# **Canadian Geographical Names Service (CGNS) Data Model and Data Dictionary**

**Edition 2.0**

**2003-02-25**

**Natural Resources Canada  
Geomatics Canada  
Centre for Topographic Information  
Geographical Names Section  
615 Booth Street, Room 634  
Ottawa, Ontario, Canada  
K1A 0E9**

Telephone: +01-613-943-0234  
Fax: +01-613-943-8282  
E-mail: [geonames@nrcan.gc.ca](mailto:geonames@nrcan.gc.ca)  
URL: <http://cgns.nrcan.gc.ca>

## Copyright Notice

© Her Majesty the Queen in Right of Canada, Department of Natural Resources.  
All rights reserved.

GeoBase®

**REVISION HISTORY**

<b>Date</b>	<b>Version</b>	<b>Description</b>
January - 2003	1.0	Original version
February – 2003	2.0	Amended version

**FUTURE WORK**

<b>Key word</b>	<b>Description</b>

## ACRONYMS AND ABBREVIATIONS

CGN1	Canadian Geographical Names, Level 1
CGNDB	Canadian Geographical Names Data Base
CGNS	Canadian Geographic Names Service
GNBC	Geographical Names Board of Canada
NAD27	North American Datum 1927
NAD83	North American Datum 1983
NTS	National Topographic System
RDBMS	Relational Data Base Management System

**TABLE OF CONTENTS**

<b>ACRONYMS AND ABBREVIATIONS .....</b>	<b>II</b>
<b>1 DATA MODEL .....</b>	<b>1</b>
<b>2 DATA DICTIONARY .....</b>	<b>2</b>
2.1 CONCISE_CODE .....	2
2.2 GENERIC_CODE .....	2
2.3 GENERIC_CODE (CATEGORY) .....	2
2.4 GENERIC_CODE (SUBCATEGORY).....	3
2.5 GEONAMES .....	3
2.6 REGION.....	5
2.7 STATUS_CODE .....	5
<b>APPENDIX A: LIST OF CONCISE CODES AND TERMS .....</b>	<b>6</b>
<b>APPENDIX B: LIST OF GENERIC CODES AND TERMS .....</b>	<b>7</b>
<b>APPENDIX C: LIST OF REGION CODES AND TERMS .....</b>	<b>9</b>

# 1 Data Model

This data model is a subset of the Canadian Geographical Names Data Base (CGNDB) represented in the form of an Entity Relationship diagram. It contains the data that is output in the GeoBase Canadian Geographical Names, Level 1 (CGN1) product by the Canadian Geographical Names Service (CGNS) (as well as operational data that is not publicly available). Data will be visualized and distributed from the CGNS database.

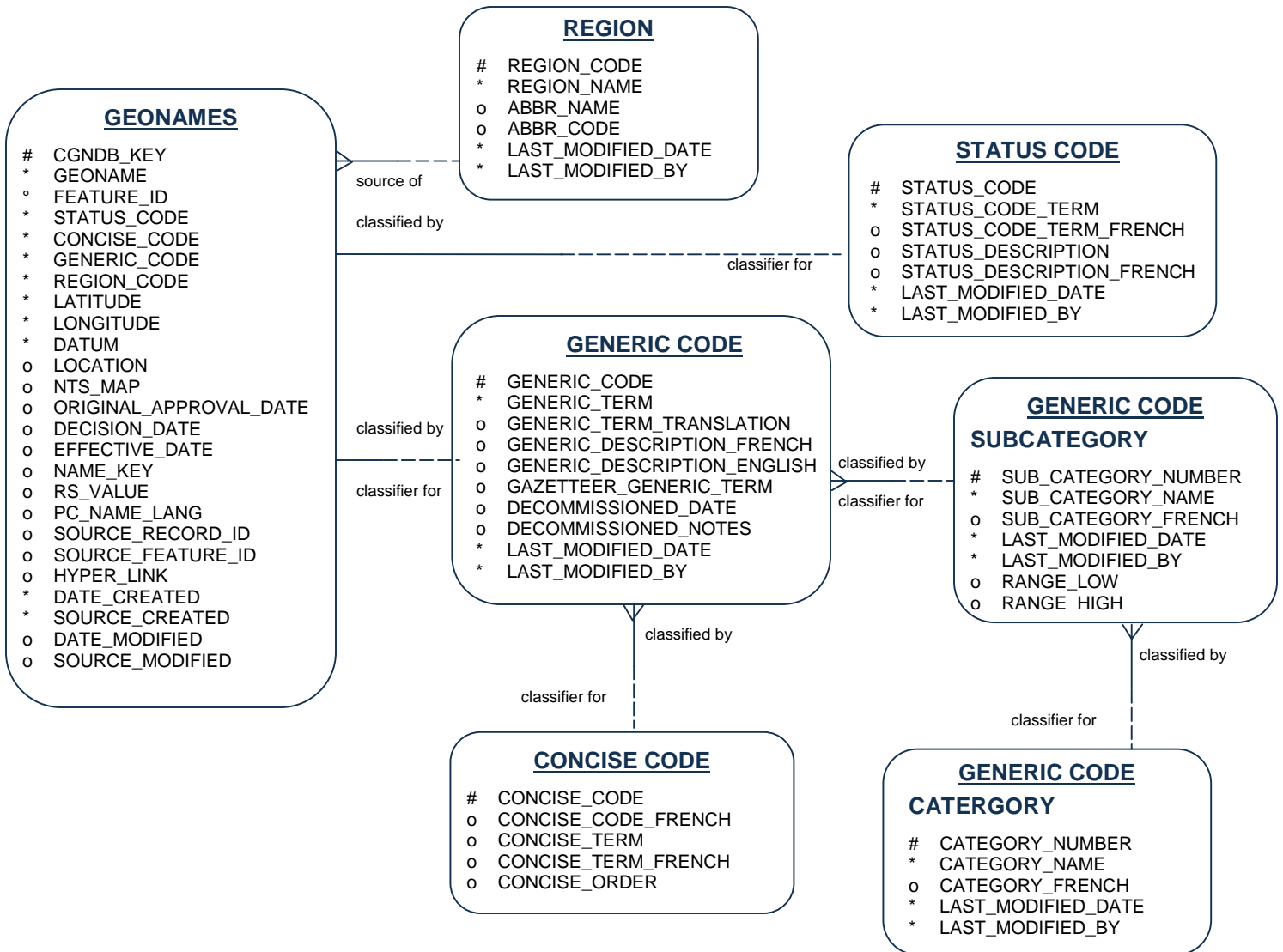


Figure 1: CGNS Data Model

## 2 Data Dictionary

The data dictionary for the CGNS dataset presents for each table stored in Oracle: the field name or column. The data type, the domain, and the description are identified only for attributes that are currently viewable in the Canadian Geographical Names, Level 1 (CGN1) dataset.

### 2.1 CONCISE\_CODE

COLUMN	DATA TYPE	DOMAIN	DESCRIPTION
CONCISE_CODE			
CONCISE_CODE_FRENCH			
CONCISE_TERM	VARCHAR2(240)	List of Concise Codes and Terms in Appendix A	The Concise Term is used to group generics, according to the type of feature.
CONCISE_TERM_FRENCH			
CONCISE_ORDER			

### 2.2 GENERIC\_CODE

COLUMN	DATA TYPE	DOMAIN	DESCRIPTION
GENERIC_CODE			
GENERIC_TERM	VARCHAR2(240)	List of Generic Codes and Terms in Appendix B	The Generic Term is used to describe the generic for a feature or place.
GENERIC_TERM_TRANSLATION			
GENERIC_DESCRIPTION_ENGLISH			
GENERIC_DESCRIPTION_FRENCH			
GAZETTEER_GENERIC_TERM			
DECOMMISSIONED_DATE			
DECOMMISSIONED_NOTES			
LAST_MODIFIED_DATE			
LAST_MODIFIED_BY			

### 2.3 GENERIC\_CODE (CATEGORY)

COLUMN	DATA TYPE	DOMAIN	DESCRIPTION
CATEGORY_NUMBER			
CATEGORY_NAME			

CATEGORY_FRENCH			
LAST_MODIFIED_DATE			
LAST_MODIFIED_BY			

## 2.4 GENERIC\_CODE (SUBCATEGORY)

COLUMN	DATA TYPE	DOMAIN	DESCRIPTION
SUB_CATEGORY_NUMBER			
SUB_CATEGORY_NAME			
SUB_CATEGORY_FRENCH			
LAST_MODIFIED_DATE			
LAST_MODIFIED_BY			
RANGE_LOW			
RANGE_HIGH			

## 2.5 GEONAMES

COLUMN	DATA TYPE	DOMAIN	DESCRIPTION
CGNDB_KEY	NOT NULL VARCHAR2(10)		The CGNDB Key is a five digit alphabetical sequence code assigned to each record in the CGNDB. As a new record is entered in the database, a unique CGNDB Key is automatically assigned to the new entry. The first letter of the CGNDB Key indicates the region in which the feature is located.
GEONAME	NOT NULL VARCHAR2(100)		The Feature Name is an alpha-numeric field that shows the actual geographical feature name or the place name.
FEATURE_ID			
STATUS_CODE			

COLUMN	DATA TYPE	DOMAIN	DESCRIPTION
CONCISE_CODE			
GENERIC_CODE			
REGION_CODE			
LATITUDE	NUMBER(10,4)		The Latitude of the feature. It is provided as decimal degrees.
LONGITUDE	NUMBER(10,4)		The Longitude of the feature. It is provided as decimal degrees.
DATUM	VARCHAR2(20)	NAD27, NAD83	The horizontal reference system code for attribute data (Latitude, Longitude). Possible code values are: NAD27 (North American Datum 1927) or NAD83 (North American Datum 1983).
LOCATION			
NTS_MAP	VARCHAR2(4000)		The number(s) of the NTS map sheet(s) on which the feature or place can be found.
ORIGINAL_APPROVAL_DATE			
DECISION_DATE			
EFFECTIVE_DATE			
NAME_KEY			
RS_VALUE			
PC_NAME_LANG			
SOURCE_RECORD_ID			
SOURCE_FEATURE_ID			
HYPER_LINK			
DATE_CREATED			
SOURCE_CREATED			
DATE_MODIFIED			
SOURCE_MODIFIED			

**2.6 REGION**

COLUMN	DATA TYPE	DOMAIN	DESCRIPTION
REGION_CODE			
REGION_NAME	VARCHAR2(240)	List of Region Codes and Terms in Appendix C	The Region Name is used to identify the province or territory within which the feature or place is located. A record may not have more than one Region Name. If a feature lies on or crosses a provincial or territorial boundary, it is therefore in more than one region. The feature must be approved by all jurisdictions involved and it will have a separate record, and a different Region Name for the part of the feature within each province or territory.
ABBR_NAME			
ABBR_CODE			
LAST_MODIFIED_DATE			
LAST_MODIFIED_BY			

**2.7 STATUS\_CODE**

COLUMN	DATA TYPE	DOMAIN	DESCRIPTION
STATUS_CODE			
STATUS_CODE_TERM			
STATUS_CODE_TERM_FRENCH			
STATUS_DESCRIPTION			
STATUS_DESCRIPTION_FRENCH			
LAST_MODIFIED_DATE			
LAST_MODIFIED_BY			

## APPENDIX A: List of Concise Codes and Terms

The following is the attribute domain and their corresponding term for the concise\_code attribute of the CGNS data model.

CONCISE_CODE Attribute value (E)	CONCISE_CODE_FRENCH Attribute value (F)	CONCISE_TERM Attribute term (E)	CONCISE_TERM_FRENCH Attribute term (F)
BAY	BAIE	Bay	Baie
BCH	PLAG	Beach	Plage
CAPE	CAP	Cape	Cap
CAVE	CAV	Cave	Caverne
CHAN	CHEN	Channel	Chenal
CITY	VIL1	City	Ville
CLF	ESC	Cliff	Escarpe
CRAT	CRAT	Crater	Cratère
FALL	CHUT	Falls	Chute
FOR	FOR	Forest	Forêt
GEOG	GÉOG	Geographical area	Zone géographique
GLAC	GLAC	Glacier	Glacier
HAM	HAM	Hamlet	Hameau
IR	RI	Indian Reserve	Réserve indienne
ISL	ÎLE	Island	Île
LAKE	LAC	Lake	Lac
MIL	MIL	Military area	Réserve militaire
MISC	DIV	Miscellaneous	Divers
MTN	MNT	Mountain	Mont
MUN1	AZM1	Other municipal/district area - major agglomeration	Autre zone municipale / de district – agglomérations majeures
MUN2	AZM2	Other municipal/district area - miscellaneous	Autre zone municipale / de district - divers
PARK	PARC	Conservation area	Zone de préservation
PLN	PLNE	Plain	Plaine
PROV	PROV	Province	Province
RAP	RAP	Rapids	Rapide
RIV	CDE	River	Cours d'eau
RIVF	EFLV	River feature	Entité fluviale
SEA	MER	Sea	Mer
SEAF	EMAR	Sea feature	Entité maritime
SEAU	SMER	Undersea feature	Entité sous-marine
SHL	H-FD	Shoal	Haut-fond
SPRG	SRCE	Spring	Source
TERR	TERR	Territory	Territoire
TOWN	VIL2	Town	Ville
UNP	LNO	Unincorporated area	Lieu non organisé
VALL	VALL	Valley	Vallée
VEGL	VÉGB	Low vegetation	Végétation basse
VILG	VILG	Village	Village

## APPENDIX B: List of Generic Codes and Terms

The following is the attribute domain and their corresponding term for the generic\_code attribute of the CGNS data model.

Attribute Value for GENERIC_CODE	Attribute Value for GENERIC_TERM
1	City
2	Town
3	Village (1)
4	Metropolitan Municipality
6	Community (1)
441	Specialized Municipality
9	Separated Town
11	Hamlet (1)
12	Summer Village
14	Municipalité
15	Cité
16	Resort Municipality
17	Organized Hamlet
18	Resort Village
19	Northern Hamlet
20	Northern Settlement
21	Northern Village
23	Ville (2)
24	Urban Community (1)
27	Municipalité de canton
28	Municipalité de cantons unis
29	Municipalité de paroisse
30	Municipalité de village
100	Hamlet (2)
101	Village (2)
102	Police Village
103	Rural Village
104	Settlement (1)
105	Compact Rural Community
108	Locality
109	Lieu-dit
110	Railway Junction
111	Railway Point
112	Station
113	Post Office
114	Landing (1)
115	Siding
120	Fort
121	Community (2)
122	Dispersed Rural Community
123	Hameau
124	Localité
125	Bureau de poste
126	Ville (1)
127	Jonction
129	Gare
130	Bureau de poste militaire

## APPENDIX B: List of Generic Codes and Terms (Continued)

Attribute Value for GENERIC_CODE	Attribute Value for GENERIC_TERM
131	Centre de villégiature
132	Weather Station
141	Customs Point
145	Metis Settlement
148	Northern Community
149	Unincorporated Village District
151	Centre de ski
154	Vacated or Seasonal Settlement
158	Former Locality
159	Former Post Office

## APPENDIX C: List of Region Codes and Terms

The following is the attribute domain and their corresponding term for the region\_code attribute of the CGNS data model.

Attribute Value for REGION_CODE	Attribute Value for REGION_NAME
10	Prince Edward Island/Île-du-Prince-Édouard
11	Newfoundland and Labrador/Terre-Neuve-et-Labrador
12	Nova Scotia/Nouvelle-Écosse
13	New Brunswick/Nouveau-Brunswick
24	Quebec/Québec
29	Quebec/Québec(no longer in use)
35	Ontario
46	Manitoba
47	Saskatchewan
48	Alberta
59	British Columbia/Colombie-Britannique
60	Yukon Territory/Territoire du Yukon
61	Northwest Territories/Territoires du Nord-Ouest
62	Nunavut
72	Undersea Features