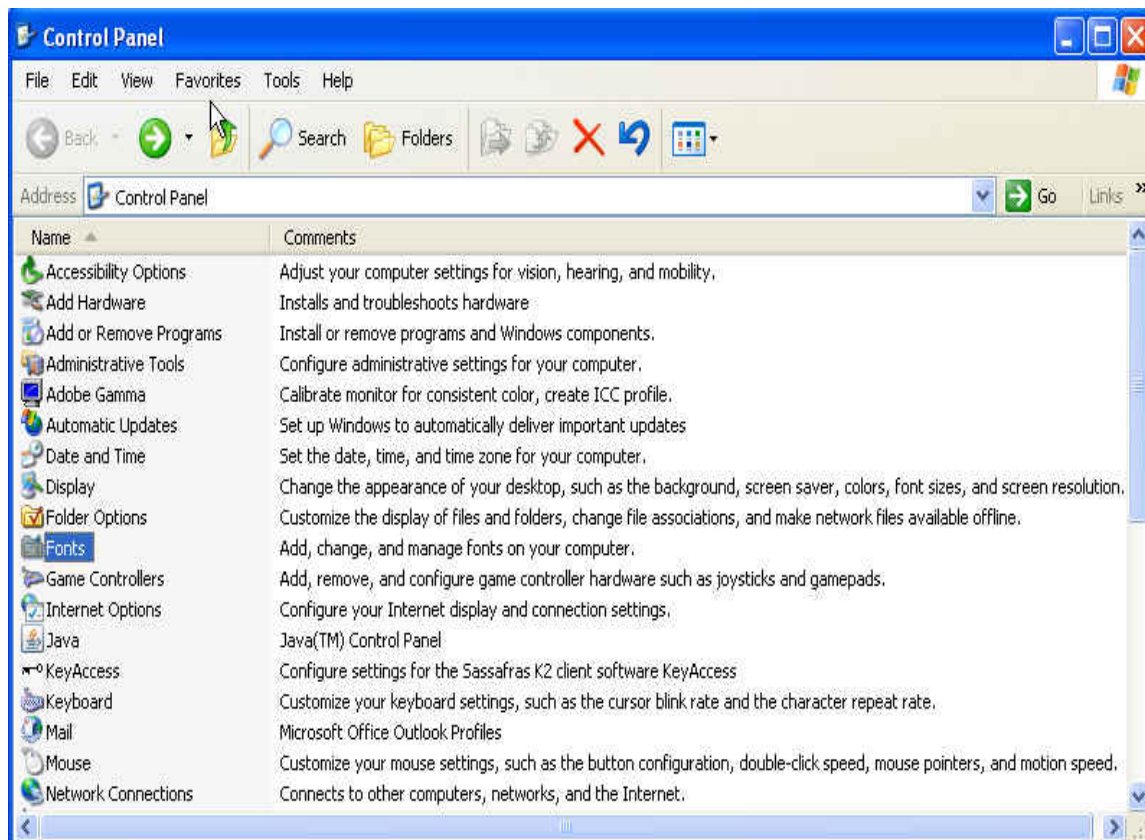


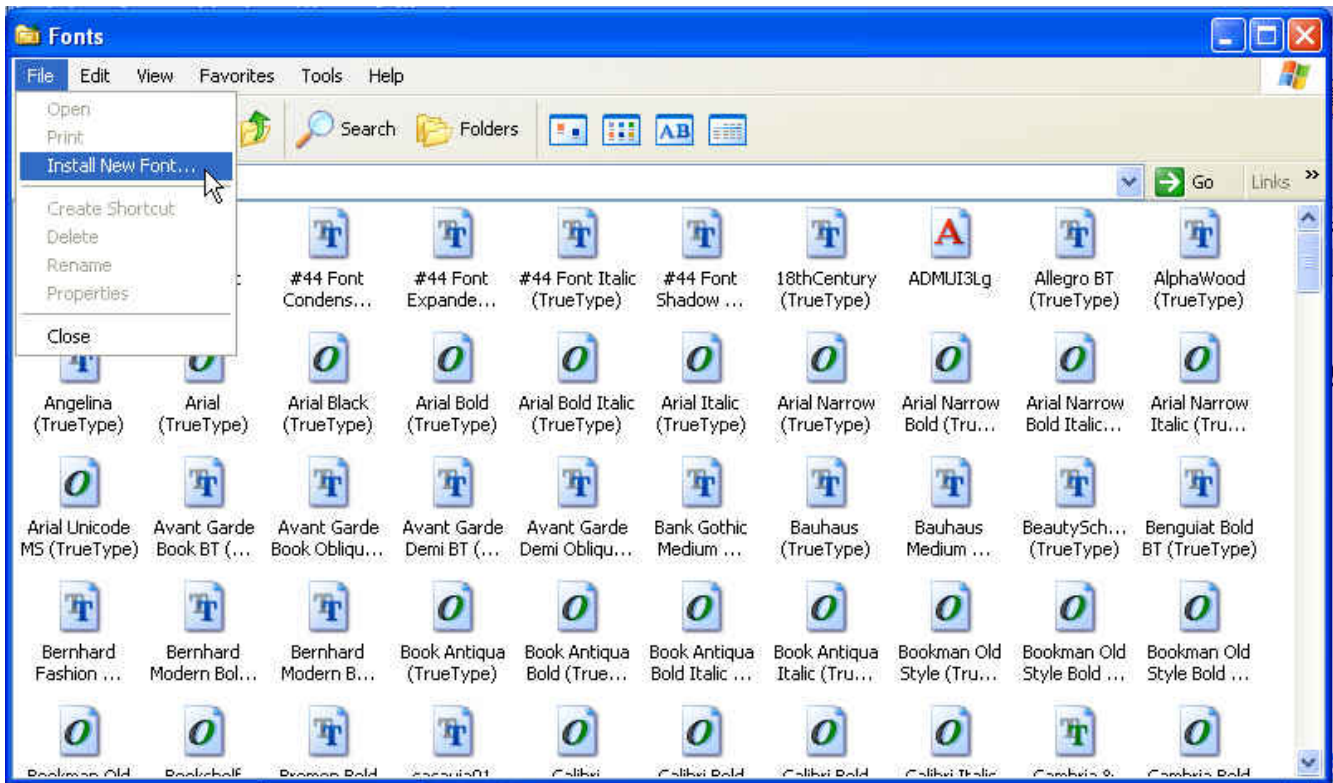
How to add Algonquin and Inuktitut aboriginal fonts in Arc Map GIS software?

→ Please note this procedure applies to the Nunavut territory only.

1. Download the KAYASES font under the following link:
<http://www.languagegeek.com/font/fontdownload.html#AlgonAndInu>.
2. Unzip and save it in a file you will remember of.
3. For adding the Kayases font to your fonts library:
 1. Under Start > Control Panel select 'Fonts'.



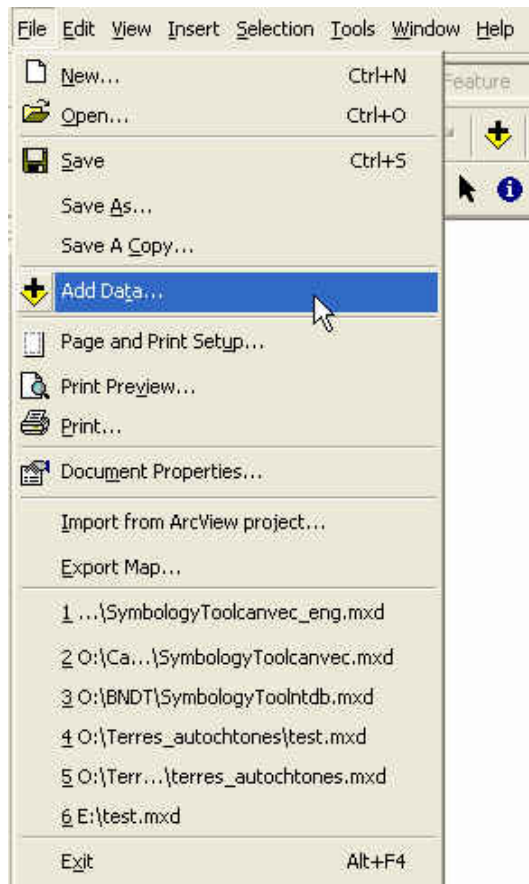
2. Click on 'Install New Font...' under the File tab.



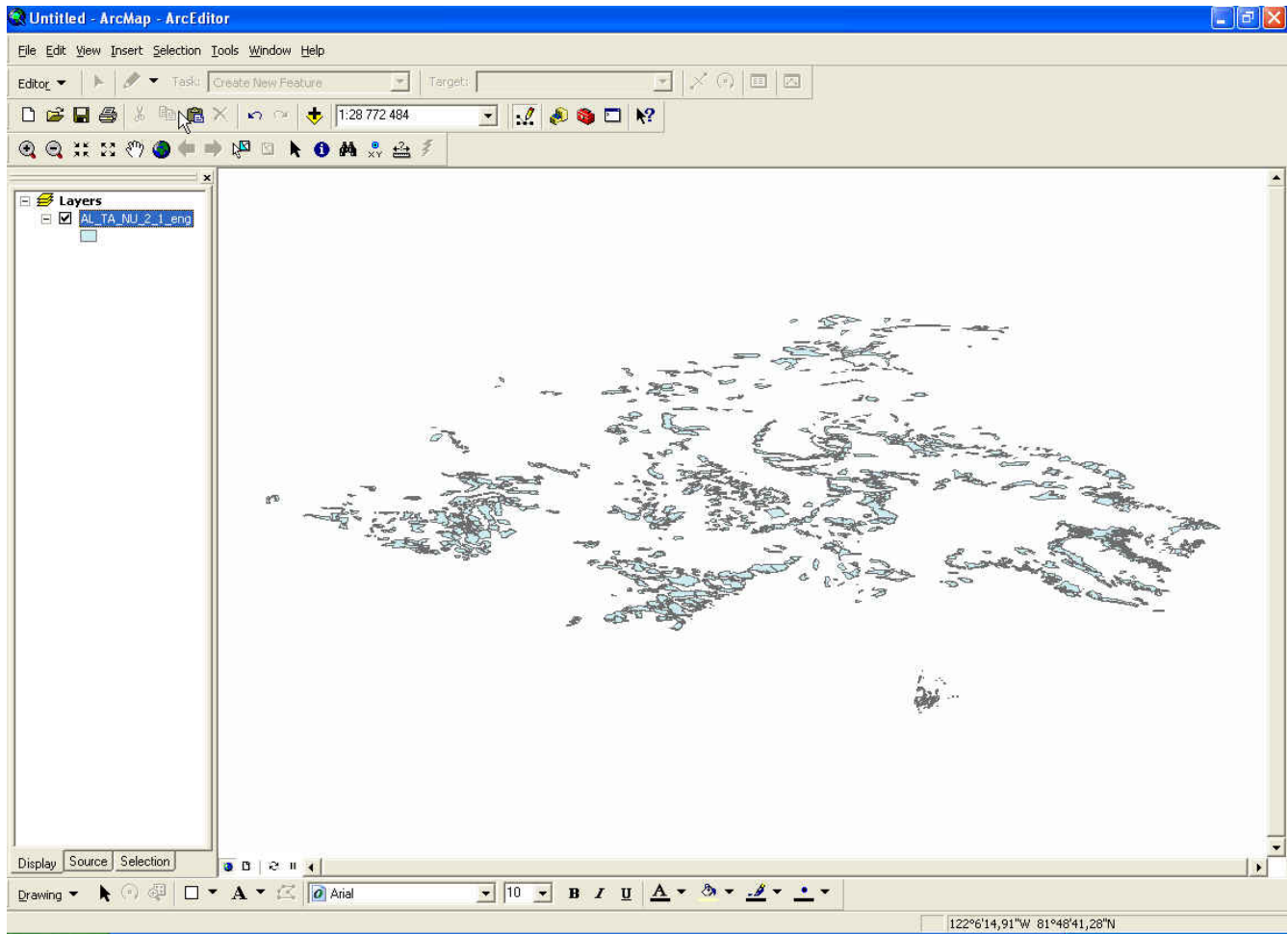
3. Select the folder where you have saved the Kayases font then click 'OK'.



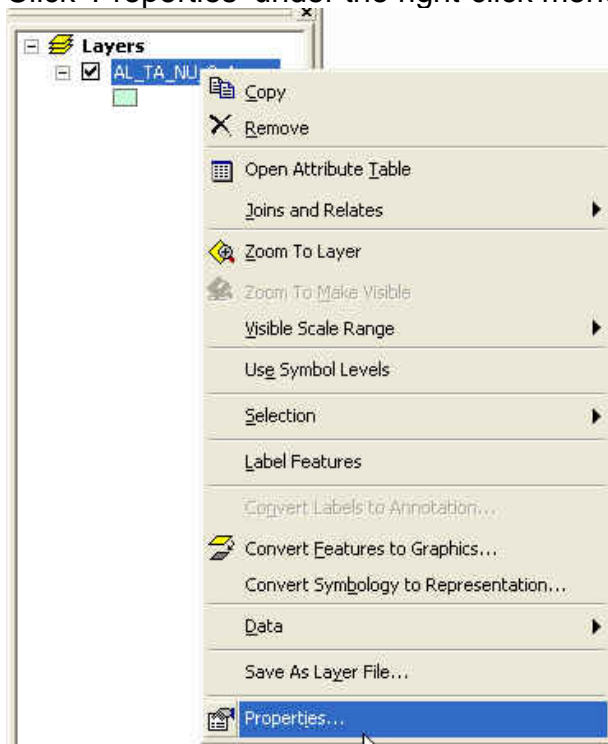
- Download and save the Nunavut Aboriginal Lands dataset available on GeoBase website:
<http://www.geobase.ca/geobase/en/search.do?produit=alta&language=en>.
- Open the Arc Map GIS software and add the Nunavut Aboriginal Lands you have previously downloaded.



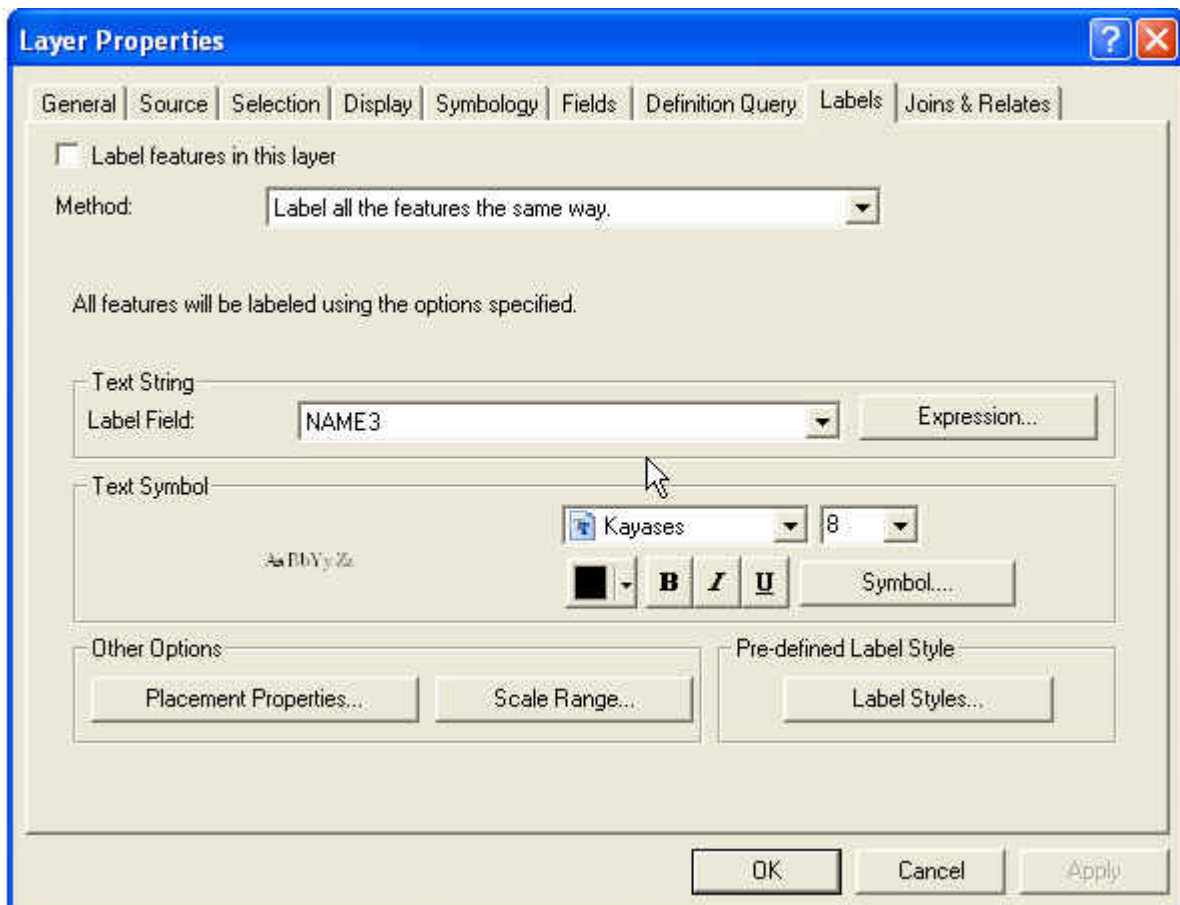
6. You should now have something looking like the screenshot below.



7. Click 'Properties' under the right-click menu of your data layer.



8. Choose 'NAME3' as the 'Label Field' under the 'Labels' tab.
9. Select the Kayases font in the 'Text Symbol' section.

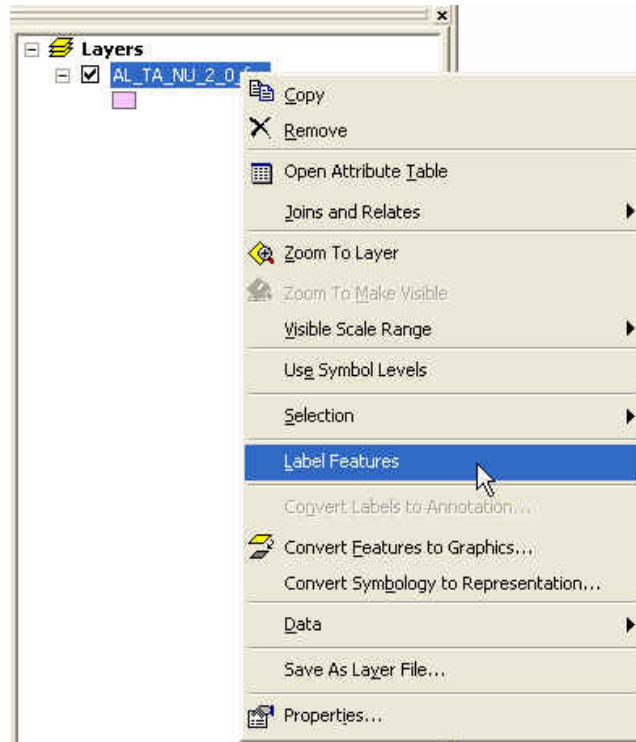


9. Click on 'Apply' then on 'OK' so Arc Map software validates the modifications.

Arc Map is now configured to be unable to read the Algonquian and Inuktitut polices.

However if you want the entities to be labelled in Algonquian / Inuktitut:

1. Click 'Label Features' in the right click menu of your data layer.



The entities should now be labelled like the screenshot below.

