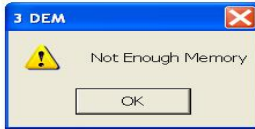


Problem of reading when one opens more than one file with the 3DEM GIS software?

The 3DEM software indicates a message “Not enough memory” during the reading of files and can also disappear from your screen and nothing to show.



Reading DEM File ...

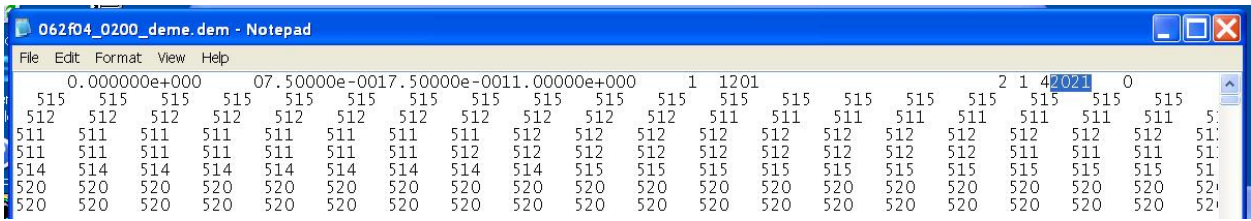
The problem is caused by the presence or not of the edition/version when one opens several files at the same time. The software rejects this inconsistency. Information indicated or not depends on the product specifications used during the file production. This information is registered in the field #28 in the specifications:

http://www.geobase.ca/doc/specs/pdf/GeoBase_product_specs_CDED_3.pdf

Type A Logical Record (Continued)

Data Element	Contents	Format Type	ASCII	Domain of Values/ Explanation
26	Vertical datum	INTEGER*1	I2	1 local mean sea level (MSL) 2 National Geodetic Vertical Datum 1929 (NGVD29) 3 North American Vertical Datum 1988 (NAVD88) <i>This field is set to "1".</i>
27	Horizontal datum	INTEGER*1	I2	1 NAD27 2 WGS72 3 WGS84 4 NAD83 <i>This field is set to "4".</i>
28	CDED edition/version, Product Specifications edition/version	INTEGER*2	I4	1020 represents the CDED edition version, and the CDED Product Specifications edition version. Two first digits = CDED edition version (e.g. 10 means edition 1 version 0) Two last digits = Product Specifications edition version (e.g. 20 means edition 2 version 0 of the Product Specifications)
29	Percent void	INTEGER*2	I4	This field contains the percentage of nodes set to void

To solve this problem, it is necessary to edit files with any simple text editor such as NotePad, MS Word, Ultra Edit...

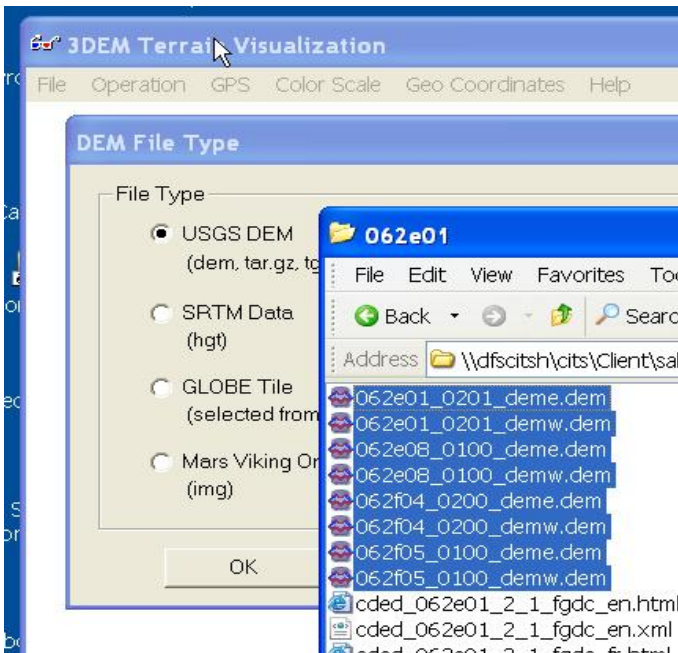
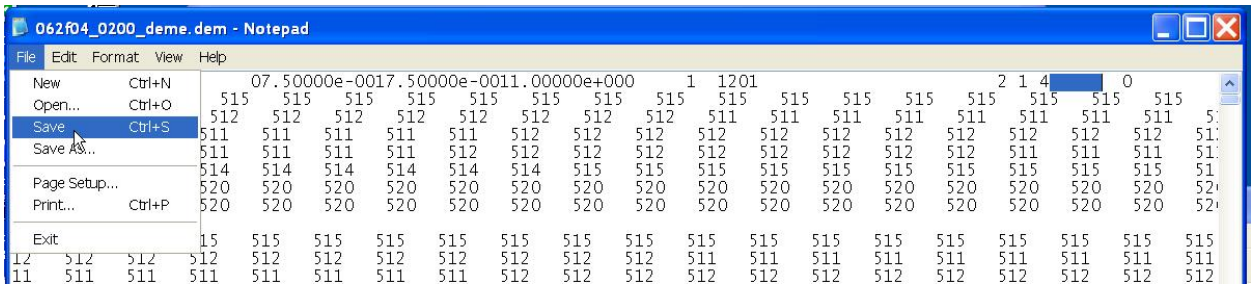


Immediately after field #27 next to the by default value '4' for the NAD83 Datum, delete from field #28 all 4 characters representing the edition/version and replace them by 4 blank spaces and save your file.

Note: Important to keep the same number of characters.

It is necessary to repeat this exercise with all CDED files (East-West parts).

Example before and after the correction in the file.



From now, it is possible to open several CDED files made from different specifications version with the 3DEM software.